

## **ATC-3X and ATC-4X Rivet Gun Operating Manual**

### ***SAFETY FIRST!***

#### **ALWAYS COMPLY WITH:**

1. General Industry Safety & Health Regulations, Part 1910, OSHA 2206, available from Sup 't of Documents; Government Printing Office; Washington DC 20402
2. Safety Code for Portable Air Tools, ANSI B186.1 available from American National Standards Institute, Inc.; 1430 Broadway; New York, NY 10018
3. State and Local regulations.

Portions of the above are abbreviated below for quick reference to some of the more important regulations.

#### **THESE EXCERPTS ARE NOT INTENDED TO BE ALL INCLUSIVE – STUDY AND COMPLY WITH ALL REGULATIONS!**

1. **TOOL INTENT** – Tools shall be used only for purposes intended in their design (refer to product catalog).
2. **AIR SUPPLY** – Test and operate tools at 90 PSIG maximum unless the tool is marked otherwise. Use recommended airline filters-regulators-lubricators.
3. **UNUSUAL SOUND or VIBRATION** – If the tool vibrates or produces an unusual sound, repair immediately for correction.
4. **OPERATOR PROTECTIVE EQUIPMENT** – Wear goggles or face shield at all times tool is in operation. Other protective clothing shall be worn, if necessary. **SEE REGULATIONS.**
5. **SAFETY MAINTENANCE PROGRAM** - Employ a safety program to provide inspection and maintenance of all phases of tool operation and air supply equipment in accordance with “*Safety Code for Portable Air Tools.*”

# Air Hammer Operating Instructions

**Caution: Maximum operating pressure is 90 psi.. Never use higher air pressures to increase the output of the Rivet Gun. Overloading will drastically shorten the life of all internal parts.**

Daily, before using and putting tool into operation, disconnect air hose and put a small amount of lubricant into tool air inlet. Recommend a turbine or spindle grade oil with a viscosity of 100-150 S.U.S. at 100 degrees Fahrenheit which contains a rust inhibitor. Blow out airline to clear it of accumulated dirt and moisture, connect tool and operate on low throttle to allow oil to be carried to the interior of the tool.

Always place a rivet set in the hammer and hold the tool down to the work before operating. Damage to the tool or retainer may result if this precaution is not followed. The chisel retainers are not designed for complete safety against accidental release of cutters or hammers. To avoid injury, the trigger must never be depressed unless the chisel is held firmly against the work piece. When the tool is not in actual use, the tool must be removed.

## Maintenance

**Caution: Disconnect Rivet Gun from power air before servicing.**

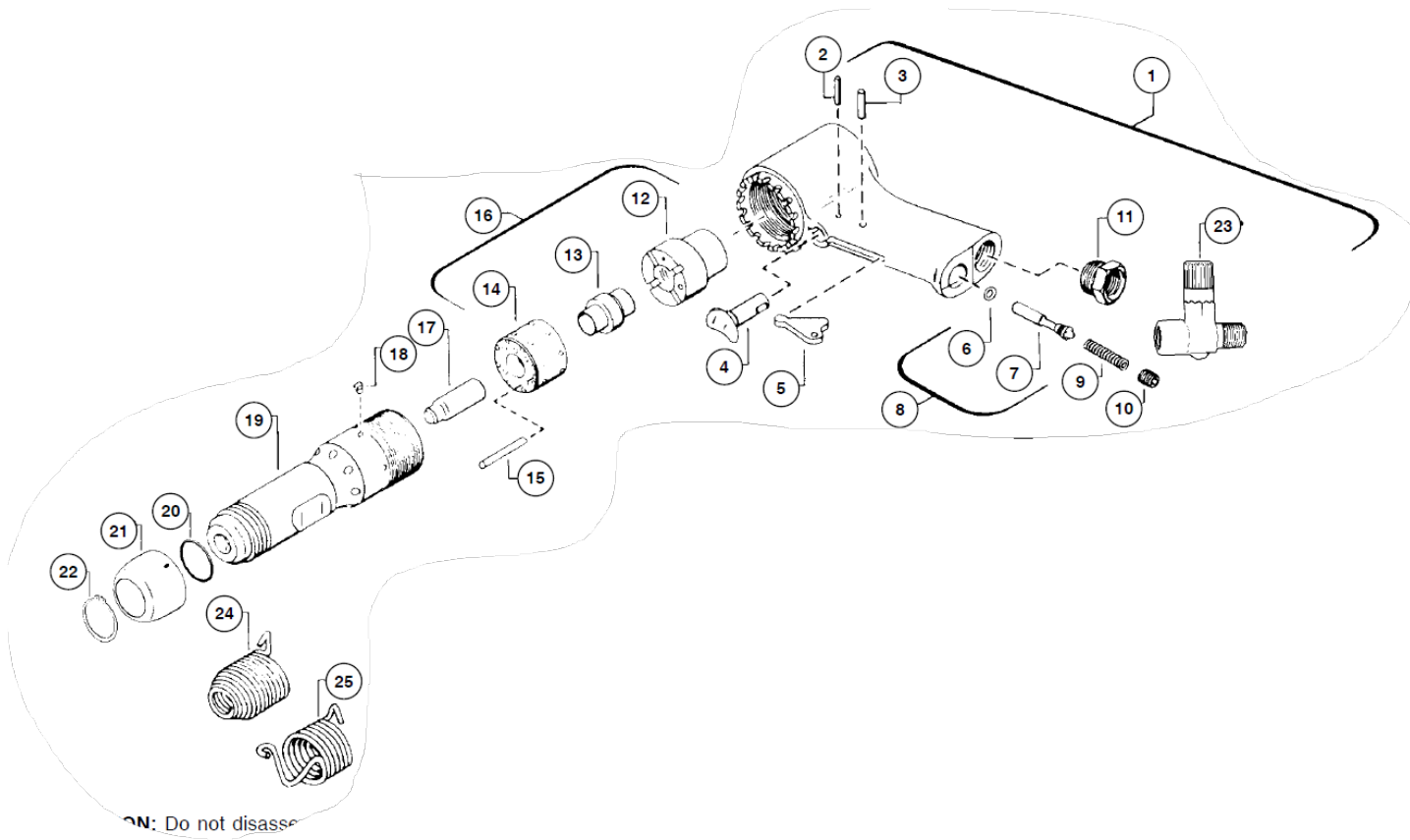
1. Keep tool properly lubricated
2. Provide 90 psi. of clean, dry air at the tool
3. Use hose and connections of proper size and good condition.
4. Always use an air regulator when in use.



ATIATC4X



ATIATC3X



ON: Do not disassemble

<b>Index Number</b>	<b>J.P. Part No.</b>	<b>Parts List Description</b>	<b>No. Req'd</b>
1	38-91824	Handle-Complete Assembly (alum.) (Incl: Index No. 2,3,4,5,8,9,10,11,22)	1
2	38-91825	Pin - Lever Stop	1
3	38-91826	Pin - Lever	1
4	38-91827	Button - Lever Push	1
5	38-91828	Lever - Valve	1
6	38-91829	"O" Ring (-700)	1
7	38-91830	Body - Valve (throttle)	1
8	38-91831	Valve - Throttle Complete (Includes: Index No. 6 & 7)	1
9	38-91832	Spring - Valve	1
10	38-91833	Plug - Throttle Tube	1
11	38-91834	Bushing - Inlet	1
12	38-91835	Lid - Valve Case	1
13	38-91836	Valve	1
14	38-91837	Case - Valve	1
15	38-91838	Dowel - Valve Case	1
16	38-91839	Case - Valve Complete (Includes: Index No. 12, 13, 14, 15)	1
17	38-91840	Piston (2XSP)	1
	38-91841	Piston (3XSP) & (4XSP)	
18	38-91842	Pin - Cylinder Lock	1
	38-91843	Barrel with set Sleeve (2XSP)	1
19	38-91844	Barrel with set Sleeve (3XSP)	1
	38-91845	Barrel with set Sleeve (4XSP)	1
20	38-91847	O' Ring	1
21	38-91846	Deflector - Exhaust	1
22	38-91848	Clip - Retainer	1
23	09-140	Regulator - Air (1/4" Inlet)	1
24	09-RB-2	Retainer - Set ("Beehive" type)	1
25	09-RH-2	Retainer - Set ("Handi" type)	1