



Big Diagnostic Power for Big Trucks

EEHD704004

PRO-LINK® Ultra – Elite Kit

Features and Benefits

- OEM-proprietary diagnostics for commercial vehicles from light diesels to Class 8 heavy-duty trucks
- Perfect for truck shops, general repair, fleet maintenance, mobile service and municipalities
- Essential maintenance functions: Read & clear fault codes; Access trip data to monitor vehicle & driver performance; Create health reports; View live data to verify performance
- Powerful repair functions: Graph live data to find tough problems, Special Tests to verify component failures and validate system operation, Program replacement components, Expanded component diagnostics; Custom ECU programming configuration
- Tested and licensed OEM coverage for all major systems, including engines, transmissions, ABS, instrument cluster, emissions, SCR, body controls and more
- Covers systems and components for the major HD manufacturers: Volvo®, Mack®, Paccar®, Kenworth®, Nissan®, Peterbilt®, Freightliner®, International® trucks, and more. Plus light and medium-duty truck coverage



Expert Customer Care & Technical Support: 800-639-6774

CE – Not Required

Country of origin: USA

Snap-on is a trademark, registered in the United States and other countries, of Snap-on Incorporated.

All other trademarks are marks of their respective holders.

©Snap-on Incorporated 2014. All Rights Reserved.

Snap-on, 2801 80th Street, Kenosha, WI 53143 www.snapon.com

May 2014
Page 1 of 5





EEHD704004

Additional Features & Benefits

- Easy to use, common user interface for all makes
- Big 8-1/2 inch class color touchscreen display for clarity and fast navigation; Automatically adjusts brightness for indoor & outdoor use
- Connectivity tools make it easy to save, view and share vehicle results:
 - HDMI port to view results on external monitor
 - SD memory card slot to store/share test results
 - WiFi® and Ethernet port for networking
 - USB port for accessories like a memory stick, keyboard or printer
- Rugged solid state drive to store your data and software upgrades
- Your choice of power sources: internal lithium ion battery, 120VAC adapter, or vehicle connector
- Get direct links from fault codes to step-by-step test & diagnostic procedures, component locators, wiring diagrams with the optional REPAIR>CONNECT®
- Internet delivery of software upgrades directly to the tool . Free trial period to try before you buy. See your Snap-on representative to activate
- Software upgradable to accommodate new technology, ECUs, EPA requirements
- Capture/playback live data recordings – convenient for road tests
- Over 100 Special Tests to override vehicle controls and operating conditions for diagnostic validation – e.g. DPF clean/replace, cylinder contribution, injector tests, timing and boost calibration
- Over 500 Programmable Parameters to configure your fleet to operating limits you define – e.g. idle shutdown, speed limit, driver reward, engine rating, engine protection shutdown, injector replacement



ACTIVE - 3

- Engine #1
- Air Inlet Shutoff Shutdown
- No Associated Parameter
PID 52 - FMI 11 - FLASH CODE 00
- More Info
- Engine #1
- Cylinder #7 Injector Current Low
- No Associated Parameter
PID 7 - FMI 5 - FLASH CODE N/A
- More Info
- Engine #1
- Low Atmospheric Pressure

INACTIVE - 4

- Engine #1
- Low Coolant Level Warning
PID 111 - FMI 1 - FLASH CODE 62
- More Info
- Clear
- Engine #1
- Cylinder #7 Injector Current Low
PID 7 - FMI 5 - FLASH CODE N/A
- More Info
- Clear
- Engine #1
- High Clean Gas Induction Mass Flow
PID 316 - FMI 0 - FLASH CODE N/A
- More Info
- Clear

FAULTS
3 ACTIVE
4 INACTIVE

EVENTS
1 CRITICAL
3 LOGGED

Engine #1
Caterpillar Engine

CALS

TESTS

Clear All Inactive Faults

Read and clear OEM-proprietary fault codes with easy to understand code descriptions

Max Vehicle Speed Limit

Current Value: 70.0

New Value: mph

Minimum Value: 1

Maximum Value: 100

Tattle Tale: 24

Information:
Programming Command Successful

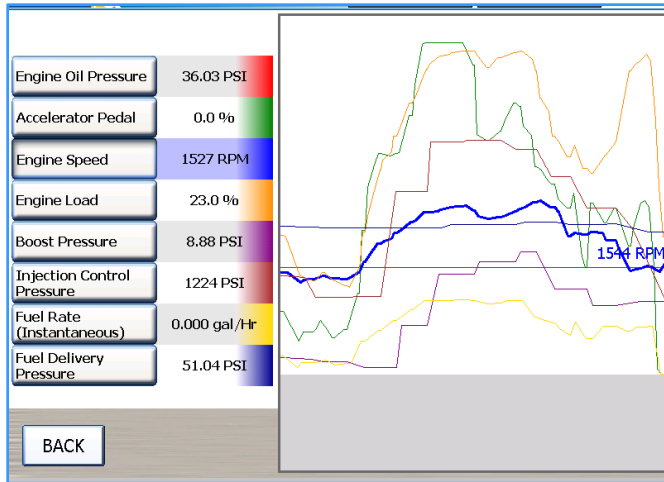
UPDATE OK CLOSE

Available Categories

- Engine #1
- Brakes, Power Unit
- Transmission #1
- Cruise Control
- Engine Warning & Protection
- Road Speed Limiting
- Two Speed Axle
- Engine/Family Transmission
- Customer Password

Previous Page Page 2 of 4 Next Page

Powerful calibration functions customize and configure vehicle operating conditions



Compare live data for multiple systems. Graph system operating data in real time

Available Categories

- Cylinder Cutout
- Compression Test
- Idle Speed Balance
- DPF System (Perform Parked Regeneration)
- DPF System (Purge Hydrocarbon Doser)
- DPF System (Request Driving Regeneration)
- Fan Diagnostic
- Intake Throttle Valve
- Voltage Test
- Activate Digital Output (MCM)
- Activate Analog Output (MCM)
- Activate Digital Output Functions (CPC)

Previous Page Page 1 of 3 Next Page

TESTS

Previous Page Page 2 of 3 Next Page

Special tests to control vehicle operation, helps to confirm diagnosis and verify repairs



EEHD704004

Included

- PRO-LINK® Ultra Heavy-duty Diagnostic System
- 8 ft data cable, 16-Pin J1962 OBDII adapter, 9-pin Deutsch® adapter, 6-pin *Deutsch* adapter, GM 12-pin adapter, PLC adapter
- Hard shell carrying case with cushioned foam organizer
- Complete guide book of fault code descriptions
- High-energy Lithium-ion battery pack
- 120VAC power adapter

Elite Kit - Included Software Coverage:

- EEHD864005 - Allison® Transmission – GEN IV, 1K/2K, WTEC, CEC1
- EEHD864007 - Heavy Duty Standard J1939 – 2001–current
- EEHD864008 - Heavy Duty Standard J1708 – 1988–current
- EEHD864009 - Navistar® MaxxForce® Engines – 2007-12 EPA '07, and EPA '10 medium and heavy-duty
- EEHD864010 - International® 1, 2, 3 Box Engines 1994–06
- EEHD864013 - Bendix® ABS Brake Systems
- EEHD864014 - Meritor® WABCO® tractor and trailer brakes

- EEHD864015 - DDEC (II, III, IV and V) Engines 1987–06 Detroit Diesel®
- EEHD864018 - DDEC 6, 10, 13 /Series 60/MBE Engines 2007–13 *Detroit Diesel*
- EEHD864021 - Eaton®, Wabash®, Haldex® ABS trailer brakes
- EEHD864024 - Caterpillar® ACERT Engines – 2003–09
- EEHD864027 - CAT® Electronic Engines – Covers 1990–03
- EEHD864031 - *Detroit Diesel*/MBE Engines – 2001–06 pre-EPA07' MBE 900 and 4000 systems
- EEHD864048 - Light and Medium Truck (LMT) – 2001-12
- EEHD864076 - OBDII/EOBD light/medium-duty vehicles





EEHD704004

Optional Accessories

- REPAIR>CONNECT® Heavy-Duty diagnostic information system
- EEHD2450801A Screen Protector
- EEHD4001-022 Spare Battery (Standard 2400mAh)
- EEHD4001-023 Spare Battery (Extended Life 4800mAh)
- EEHD494033 Cummins® 2 & 3-pin adapter
- EEHD493015 9-pin CAT® Deutsch®
- EEHD494014 HD CATERPILLER® 9-PIN
- EEHD424001 J560 PLC Cable



WARNING



Wear safety goggles (User and Bystander)



Read additional safety warnings on pages W1 to W4 in Catalog 1200

Specifications

- 8-1/2” class LED resistive multi-touch screen
- Windows® Embedded Compact 7 operating system
- Dual-Processor Architecture
- 16GB internal solid state drive
- Integrated microphone, speaker, headphone jack
- HDMI video output, USB host & device ports, Ethernet port, SD card slot
- Vehicle network protocols supported:
CAN / J1939 / ISO15765 – 250K, 500K, 1M b/s with Autobaud (2 channels), J1708, J1850 VPW, J1850 PWM, ISO9141, KWP2000, ISO14230, ALDL, ATEC, J2411 Single-Wire CAN
- Dimensions: 10” x 7.5” x 2.2”
- Weight: 2.84 lb (1.29 kg) with standard battery