



# New Solution for Diesel Carbon Deposits

EEDF400

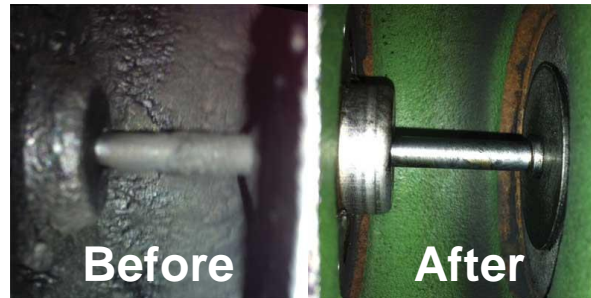
Diesel EGR & Induction Cleaning Tool

*The Problem: The performance of clean diesel engines using cooled EGR & common rail injection can be adversely affected by soot and fuel deposits.*

## Features and Benefits

- Safely cleans the Diesel EGR circuit, coolers, intake, injectors, turbo charger and fuel system.
- Converts cleaner into foam to better penetrate hard carbon.
- Increases Cetane & enhances fuel atomization for more complete combustion.
- Lowers emissions, smooths rough idle, improves fuel economy and performance.

See pages 2 & 3 for required cleaning solution & adaptors.



8.3L Cummins® EGR Valve



Country of origin: Canada

CE — NA



# EEDF400

## Usage Overview

1. Determine required adaptor (page3) & connect to Diesel EGR circuit using detailed adapter instructions.
2. Connect adapter to EEDF400.
3. Fill EEDF400 with EEDF400-EGR (1 bottle for maintenance, 2 for remediation).
4. Pour EEDF400-INJ in fuel tank for rapid injector clean-up & enhanced diesel fuel combustion
5. Run engine and operate EEDF400 per the provided operating instructions.
6. Take vehicle for drive allowing it to trigger a regeneration cycle. If needed regeneration cycle can be triggered manually on vehicles with DPF using optional Pro-Link iQ EEHD188001.

## Related Items



**EEDF400-EGR**

**Diesel EGR & Induction Cleaner**  
12 x 32oz Bottles



**EEDF400-INJ**

**Diesel Fuel Injector Cleaner**  
12 x 12oz Bottles

## Specifications

Package Dimensions	16.5" L x 10.5" W x 11.75" H
Shipping Weight	10.8lbs
Fluid Capacity	64 oz
Input Pressure Minimum	60 psi
Hose Length	7.5'
Temperature Operating Range	40 F - 120 F

**Technical Support**  
**877-776-8486**





# EEDF400



EEDF400-1



EEDF400-7



EEDF400-2



EEDF400-8



EEDF400-3



EEDF400-9



EEDF400-4



EEDF400-10



EEDF400-5



EEDF400-11



EEDF400-6



EEDF400-12

## Optional Accessories

EEDF400-1	ADAPTER EGR FORD® 6.0L Engines
EEDF400-2	ADAPTER EGR FORD® 6.4L Engines
EEDF400-3	ADAPTER EGR DURAMAX® Engines
EEDF400-4	ADAPTER EGR MERCEDES®/UNIVERSAL Engines
EEDF400-5	ADAPTER EGR DURAMAX® TURBO BOOST Engines
EEDF400-6	ADAPTER EGR CUMMINS® MANL OPENR
EEDF400-7	ADAPTER EGR 2007-2010 CUMMINS® Engines
EEDF400-8	ADAPTER EGR IZUSU®/BMW®/MERCEDES® Engines
EEDF400-9	ADAPTER EGR MERCEDES® SPRINTER® Engines
EEDF400-10	EGR S-TOOL
EEDF400-11	ADAPTER EGR FORD® 6.7L Engines
EEDF400-12	ADAPTER EGR M14X1.5 AUDI®/VW® Engines

**NOTE: Additional adapters are being developed.**



### WARNING



- Fuel vapors are explosive.
- Do not smoke, have a flame, or create a spark near fuel.
- Wear safety shield (User and Bystander).
- Explosion or ignited gases can cause injury.
- Sparks occur when connecting or disconnecting battery leads.
- Do not disconnect the battery while open fuel is present.
- Explosion or ignited gases can cause injury.
- Read and follow all safety precautions accompanying the product.
- Read additional safety warnings on pages W1 to W4 in Catalog 1200
- Unexpected electrical, thermal, or mechanical occurrences can cause injury.

