

Snap-on Incorporated  
2801 80th Street  
Kenosha, WI 53143


## Snap-on. Low Profile Ratchet Repair Instructions

# INSTRUCTIONS

Snap-on Incorporated  
2801 80th St. • Kenosha, WI 53143  
Printed in USA 3-09 ZHKRRFAF80

### Safety Information

#### **WARNING**

 Particles may fly while repairing this tool.  
**Wear safety goggles, user and bystanders.**  
*Flying particles can cause injury.*

 Improper repair can cause broken tools.

- **Read and follow instructions for proper repair.**
- **Do not immerse ratchet in fluids.**
- **Do not replace worn parts individually.**
- **Use all parts found in this kit.**

*Broken tools can cause injury.*

#### **Disassembly**

To disassemble the Low Profile Ratchet, complete the following steps.  
Refer to *Figure A and Parts List*

#### 1. Remove Inner components

- Use snap ring pliers to hold ring tabs together and remove RING (8) and RETAINING RING (9).
- Remove GEAR (2) and PAWLS (3 and 4) from gear and pawl cavities. You may need to use a twisting motion to release the pawls.
- Remove the REVERSE LEVER (5) using a T15 Torx® bit/screwdriver. The SPRING (10) and BALL (6) should be removed.

#### 2. Clean and inspect the RATCHET BODY (1).

- Check RATCHET BODY (1) for signs of excessive wear, cracks, burrs, chrome peeling, rust, etc.
- Remove excess grease, dirt, debris, etc. Clean thoroughly with a solvent and soft cloth. Dry completely before installing any replacement parts.

### Assembly

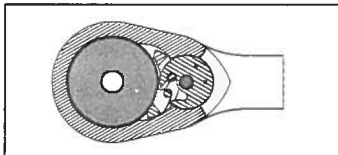
To assemble the Low Profile Ratchet, complete the following steps. Refer to *Figure A* and *Parts List*.

### IMPORTANT

The ratchet interior must be free of all foreign materials (e.g., dirt, metal chips) to ensure proper operation of the ratchet.

- ✓ This kit contains 1 cc of lubricant.  
Use only ratchet lubricant to lubricate ratchets.

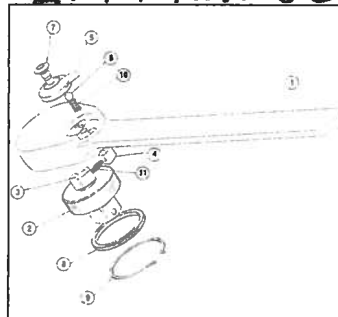
1. Using a small amount of LUBRICANT (12), coat the pawl cavity and gear cavity within the RATCHET BODY (1).
2. Place SPRING (10) into hole and place BALL (6) on top of spring.
3. Set REVERSE LEVER (5) into reverse lever cavity and fasten SCREW (7) with a T15 Torx bit/screwdriver.
4. Insert PAWLS (3 & 4) into gear cavity with legs facing REVERSE LEVER (5) (*Figure B*).



*Figure B: Pawls/Gear Cavity*

5. Insert GEAR (2) into gear cavity. Using a twisting motion, seat PAWL (3 or 4) into pawl cavity.
6. Place RETAINING RING (9) around RING (8) and hold ring tabs together with snap ring pliers. Install both on gear and release to secure.

ZRKRRAF80



*Figure A: Low Profile Ratchet*

### Parts List

#	Qty.	Part No.	Description
1	1	RAF80-10	Ratchet Body
2	1	RAF80-80	Gear, 3/8" 80T
3	1	SOEXRM16-3	Pawl
4	1	SOEXRM16-4	Pawl
5	1	SOEXRM16-5	Reverse Lever
6	1	ME9A26	Ball, 1/8"
7	1	ME3N16	Screw
8	1	SOEXRM16-6	Ring
9	1	BOERM16-CDRR	Retaining Ring
10	1	ME1A274	Spring
11	1	ME1F23	Spring
12	1	ME18A62	Lubricant

Not on pick list