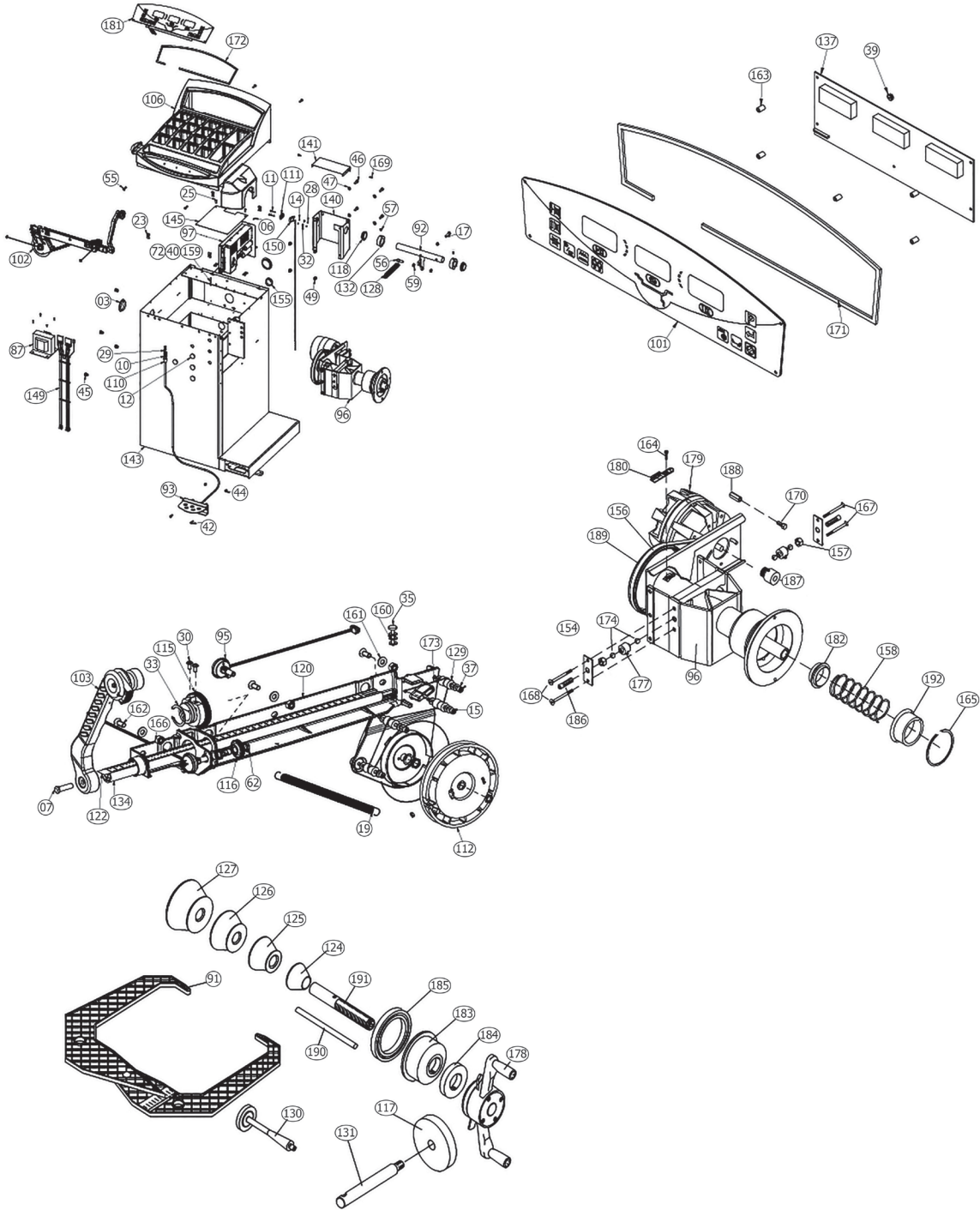


EEWB304C - Wheel Balancer



WARNING



Read instructions before use.

(Con't on page 2)
Brand Marketing, Kenosha, WI

EEWB304C - Wheel Balancer

Key	Stock Number	Description	Key	Stock Number	Description
162	1-03405A*	MSCR, OVAL HD M 6 x 14mm (3)	106	EAC0053J01A	TRAY-WEIGHT,SO LOW DIG
19	1-06567A*	SAPE TENSION SPRING	110	EAC0053J15A	BRAKE SPACER
30	1-11726A*	SCREW, SELF TAPPING FOR PLASTIC (2)	111	EAC0053J16A	MICROSWITCH PLATE
33	1-13377A*	CIRCLIP-27mm X 1.20mm DIN 471	118	EAC0060G03A	BUSHING, WHEELGUARD (2)
35	1-13609*	SCREW-HHCS,M4-16 X 8.8	128	EAM0003J21A	SPRING-EXTENSION WHEELGUARD, HD
37	1-13909*	SCR - HEX SKT HD CAP (M4 x 30mm) DIN912 (4)	132	EAM0006G02A	WHEELGUARD TUBE RING (2)
166	1-16633A*	NUT,SELF LOCK. ALL-METAL M6 A2J (3)	140	EAS2021J43A	BACKPACK- M CABINET BASE
07	1-3824*	SCREW-SELF TAP,6 X 12MM	141	EAS2021J44A	BACKPACK- M CABINET TOP
15	1-9641*	PLAIN WASHER D4mm (12)	143	EAS2081J96A	CABINET - M1 RED SPRAYED
160	1-9741*	WASHER-FLAT, M5 X 10.00D X 1MM THK (3)	145	EAS2103J17A	SHEET - FIRESHIELD
161	1-9841*	WASHER PLAIN, 6mm (3)	148	EAW0233J01A	HARNES - DISPLAY PCB
62	2-07657A*	CLAMPING DEVICE W/NUT (2)	149	EAW0233J07A	HARNES-WIRING, TRANSFORMER
173	6-00504A*	ROPE HEMINGWAY	150	EAW0233J08A	CABLE-SWITCH ASSY
95	EAA0266D20A*	ROTATIVE TRANSDUCER 100HM (2)	96	EAA0338G36A*	Vibrator Ass'y-motorized
103	EAA0346J26A	ASSY - SAPE ARM W/ EJECTOR	31	1-11833*	Nut-Hex M 10 X 1 DIN 934
112	EAC0058D06A*	Rope Reel	127	EAM0003J08A	Cone, 89-132 mm (3.50 - 5.20 inches)
115	EAC0058D12A*	COG WHEEL - 56 TOOTH	126	EAM0003J07A	Cone, 71 - 99 mm (3.23 - 3.90 inches)
116	EAC0058D13A*	Cog Wheel 28 teeth	125	EAM0003J06A	Cone, 56 - 84 mm (2.67 - 3.35 inches)
120	EAC0087G60A*	M1 SAPE SUPPORT	124	EAM0003J05A	Cone, 43 - 63 mm (1.66 - 2.50 inches)
122	EAL0349G31A*	DISTANCE SCALE	183	EAC0058D07A	Cup - Pressure
129	EAM0005D35A*	REEL-GUIDING,SAPE (4)	184	EAC0058D08A	Disk - Pressure
134	EAM0053G19A*	STANDARD. ROD SAPE, M1	178	EAA0263G66A	Quick Nut
17	1-01515A	SCREW - HHMS 8M -1.25 x 50mm	130	EAM0005D40A	Weight - Calibration
23	1-07439A	NUT - SPEED, "U" TYPE, (6)	191	EAM0021D90A	40 mm Stub Shaft
28	1-11233*	NUT - HEX, M3 DIN 934	91	EAA0247G21A	Caliper - Rim Width
29	1-11633	NUT-M6 X 5,2mmTHK, BLK (2)	117	EAC0060G02A	Flange - Cover, Hook (4)
32	1-1248	WASHER SHAKE PROOF, M3 (2)	131	EAM0006G01A	Hook - Storage (4)
40	1-1548	WASHER-EXT,SHAKEPROOF 6MM	185	EAC9958D15A	Rubber Protector
42	1-16309	SCREW - SHCS, M6 X 16mm, (2)	190	EAM0005D34A	Fastening Rod
44	1-17559A	NUTSERT - M6 (2)	101	EAA0346J22A	ASSY -DISPLAY, MEMBRANE/PANEL
45	1-17659A	NUTSERT - M10 (4)	39	1-15033	NUT-KEPS, M3 - .5 (5)
46	1-17709	SCREW - SHCS M8 X 20mm (4)	137	EAP0192P80A*	PCB ASS'Y-DISPLAY, JB VPI SYS III
47	1-17741	WASHER, 8mm DIN125A (4)	163	1-11062A	SPACER- 1/4" X 3/8" (5)
49	1-18359A	NUTSERT, M8 (4)	171	5-8426A1	STRAP-1/4" VELCRO (5-8426A1)
169	1-20423	SCREW, SELF TAPPING M4.2 X 13mm (2)	189	EAM0005D12A*	Drive Wheel
02	1-2509	SCREW-BHCS, 1/4 - 20 X 5/8 (2)	156	8-3531*	Multirib Belt 5 PJ 711 Din 7867
03	1-2676	PLUG-HOLE, 2"DIA (2)	179	EAA0266D29A*	Motor, AC 120w 1 Ph 220-240v - 50/60 Hz
155	1-3176	PLUG,1.50DIA.	188	EAM0005D09A*	Motor Distance bolt (2)
06	1-3724	SCREW-SELF TAP,5 X 10MM (6)	170	1-30701*	Screw Hex HD M 6 X 12
55	1-44009A	SCREW-BHCS, 1/4-20 X 7/8 (4)	187	EAM0005D08A*	Motor Pulley
56	1-47809A	SCREW - SHCS 3/8-16 X 1	182	EAC0058D03A*	Spring Centering Ring
57	1-47810	SCREW, SET, FLT PT M8 - 1.25 X 8mm (2)	158	1-6498*	Spring - Compression 5 X 63 X 120
59	1-5733A	NUT-HEX,3/8 (2)	192	EAS2025D14A*	Spring Case Deep Draw
10	1-6668	COMPRESSION SPRING	165	1-13077*	Snap Ring
11	1-7104	SCREW - PAN HS, M3 X 30 (2)	177	EAA0260D59A*	Transducer
159	1-7558	POP RIVET-3/16"	174	8-1144*	Ball, Steel (4)
14	1-9541	WASHER-FLAT,M3 DIN 125A (2)	154	1-2967*	Pretension Spring (2)
72	2-23201	TERMINAL LUG-6.3MM X .8MM POP RIVET	186	EAM0005D07A*	Setscrew - Hex Socket M 10 X 1 (2)
172	5-8426A2-02	STRAP-1/4" VELCRO (5-8426A2)	168	1-19903A*	Screw Hex Socket / Countersunk M 4 X 65 (2)
87	7-16201A*	TRANSFORMER- 500VA AUTOMATIC	180	EAA0344G00A*	Encoder PCB
12	8-7216	PLUG-HOLE, 16MM DIA (4)	164	1-13004*	Screw Phillip Pan HD M 4 X 6
92	EAA0255J29A	WHEELGUARD TUBE- M CABINET ASSY	167	1-17403*	Screw Hex Socket / Countersunk M 4 X 25 (2)
93	EAA0263G07A	ASSY-BRAKE PEDAL	157	1-4034*	Nut - Hex M 10 X 1 DIN 439
97	EAA0338G83B*	ASSY - IBP DIGITAL BOX	193	EAW0239D00A*	Ribbon Cable Vibratory
102	EAA0346J25A*	STAND. M1 SAPE 1D-2D ASSY	175	EAA0260D56A*	Brake lever A cpl.
181	EAA0346J32A*	ASSY - DISPLAY, SNAP-ON LOW DIG	176	EAA0260D57A*	Brake lever B cpl.

