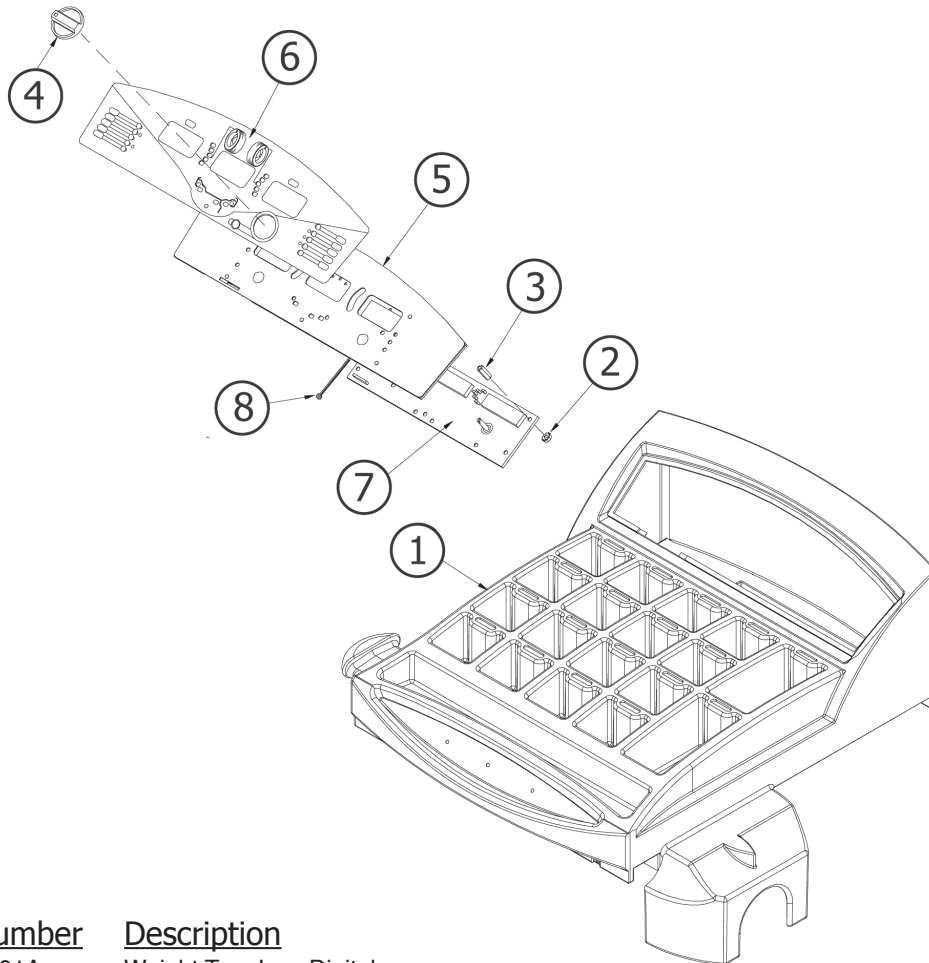


EEWB304A - Electronic Motorized Wheel Balancer

DISPLAY, TOUCH PANEL AND WEIGHT TRAY ASSEMBLY



Key	Stock Number	Description
1	EAC0053J01A	Weight Tray Low Digital
2	1-15033	Nut - Keps, M3 - .5 (5)
3	1-8261	Standoff - Hex, M3 - .5x10mm, Thdm/F (5)
-	1-1248	Washer - Ext, Shakeproof, M3 (5)
4	1591-01	Knob - Black, D Shaft
5	5-8426A1	.700 Ft Strap - Velcro, 1/4", Hook, Black (2)
6	EAA0255J09A	Membrane Switch - So Low Dig
7	EAP0192P60A	PCB Assy - Display, So Low Dig
8	EAW0233J00A	Wire Assembly - GND
-	EAW0233J01A	Harness-Display PCB

(Parts list continued on Pages 2-6)



WARNING



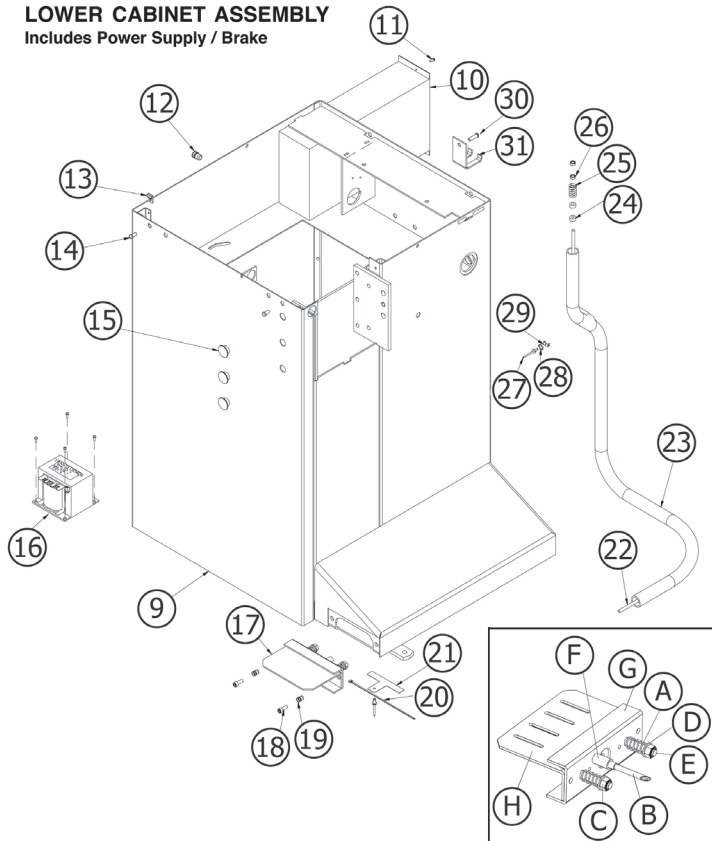
Read instructions before use.

Brand Marketing, Kenosha, WI

THERE IS A DIFFERENCE™

Snap-on and There is a Difference are trademarks of Snap-on Incorporated. All other marks are trademarks of their respective holders. ©2008 Snap-on Incorporated. All Rights Reserved. www.snapon.com.

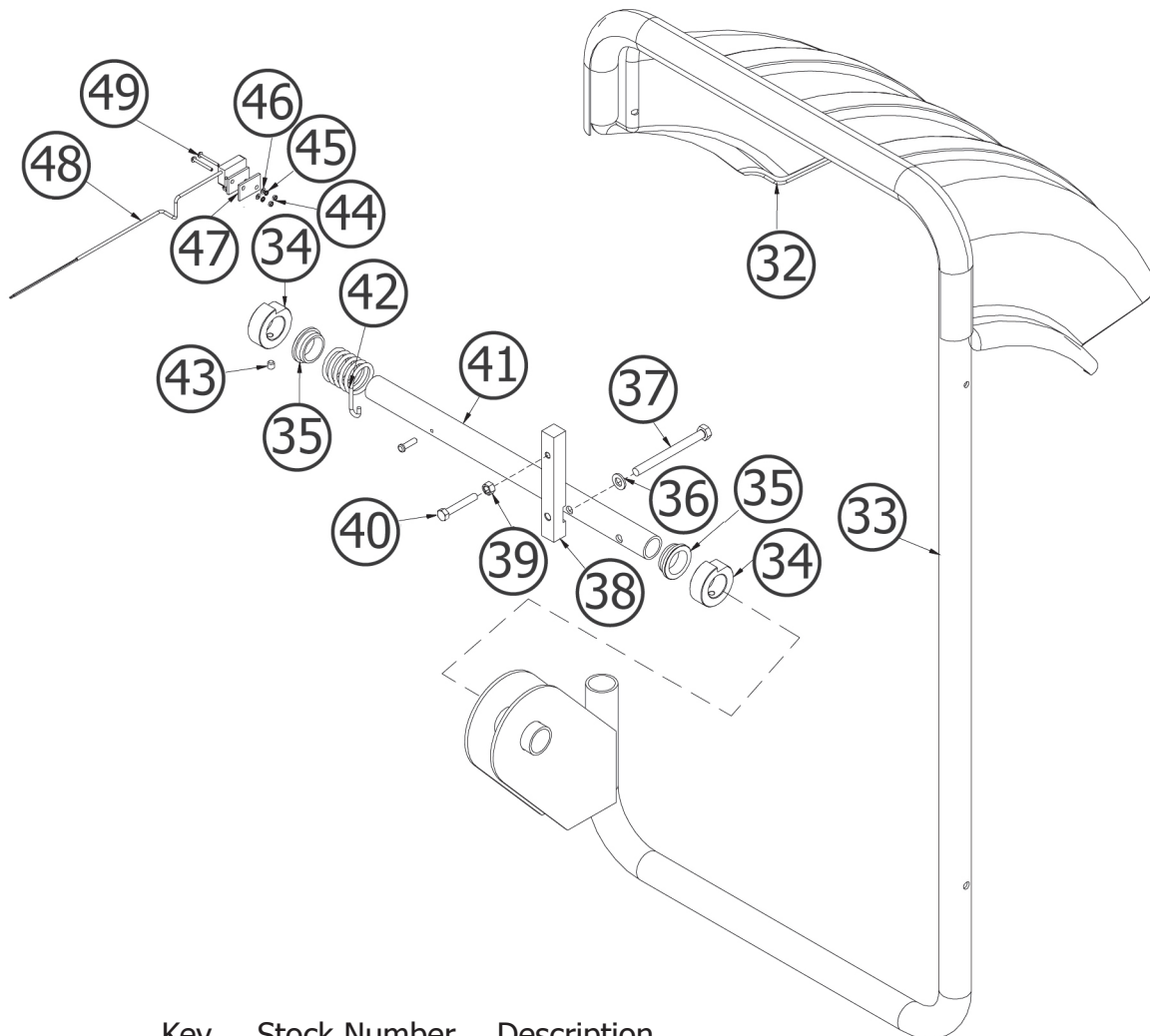
EEWB304A - Electronic Motorized Wheel Balancer



<u>Key</u>	<u>Stock Number</u>	<u>Description</u>	<u>Key</u>	<u>Stock Number</u>	<u>Description</u>
9	EAS2021J18A	Weldment-wheelguard, M1	C	1-11633	Hex Nut (2)
10	EAA0266D10A	Electronic Unit, Low Dig	D	1-10041	Washer, Plain M8 (2)
-	EAP0201D00A*	PCB Ass'y - Processor	E	1-18209	Screw, Hex Head Socket - M8 X 45 (2)
-	EAP0201D10A*	PCB Ass'y - Power Interface	F	EAM0005D18A	Spacer (2)
-	2-01429A*	Capacitor - Start, 10uf 400v	G	EAS2027G18A	Brake Pedal Support Bracket
-	2-01529A*	Capacitor - Start 20uf 400v	H	EAS2027G31A	Chamfered Brake Pedal
-	2-17947A*	Connector - 10 Pin, Wago 733-110	18	1-16309	Screw - Hex Hd Cap, M6 X 16 8.8 (2)
-	EAA0260D68A*	Frame - Digital Box	19	1-17559A	Nutsert - M6 (2)
-	EAS2025D02A*	Cover - Digital Box	20	5-1145	Cable Tie - 8" X .11
-	EAW0239D05A*	Cable - Grounding	21	EAS2027G36A	Sheet - Support, Tube
-	EAW0239D06A*	Cable - IEC Module, Power	22	EAA0260D58A	Cable - Brake, S1
-	2-16851A*	Power Entry Module	23	8-634-01	Protective Pipe For Cables
-	2-15351A*	Fuse - Time Delay, 3.2a 5x20mm	24	EAM0005D18A	Spacer (2)
-	1 - 13004*	Screw - Phil Hd, M4 X 6mm Din7985 (9)	25	1-6668	Compression Spring
-	1 - 5547*	Washer - Beveled, Serrated M4 (9)	26	1-11633	Nut - Hex (2)
11	1-3724	Screw - Self Tap, 5 X 10mm (6)	-	EAA0260D56A	Brake lever A cpl. (not shown)
12	1-17659A	Nutsert - M10 (4)	-	EAA0260D57A	Brake lever B cpl. (not shown)
13	1-6739	Nut - Tinnerman, 1/4-20, J-type (4)	27	1-7558	Pop Rivet - 3/16" (2)
14	1-2509	Screw - Bhcs, 1/4-20 X 5/8 (4)	28	1-1548	Washer - Ext, Shakeproof 6mm
15	8-7216	Plug - Hole, 16mm (6)	29	2-23201	Terminal Lug-6.3mmx8mm, Pop Riv
16	7-00902A	Transformer 115v - 230v, 500va	30	1-39809A	Screw - Bhcs, 1/4 - 20 X 1 (2)
17	EAA0263G06A	Brake Pedal Ass'y	31	EAS2021J23A	Bracket - Cal Slug
A	1-6668	Compression Spring (2)	*ELECTRONIC BOX COMPONENTS		
B	EAA0260D58A	Cable - Long	(Parts list continued on Page 3)		

EEWB304A - Electronic Motorized Wheel Balancer

WHEEL GUARD ASSEMBLY

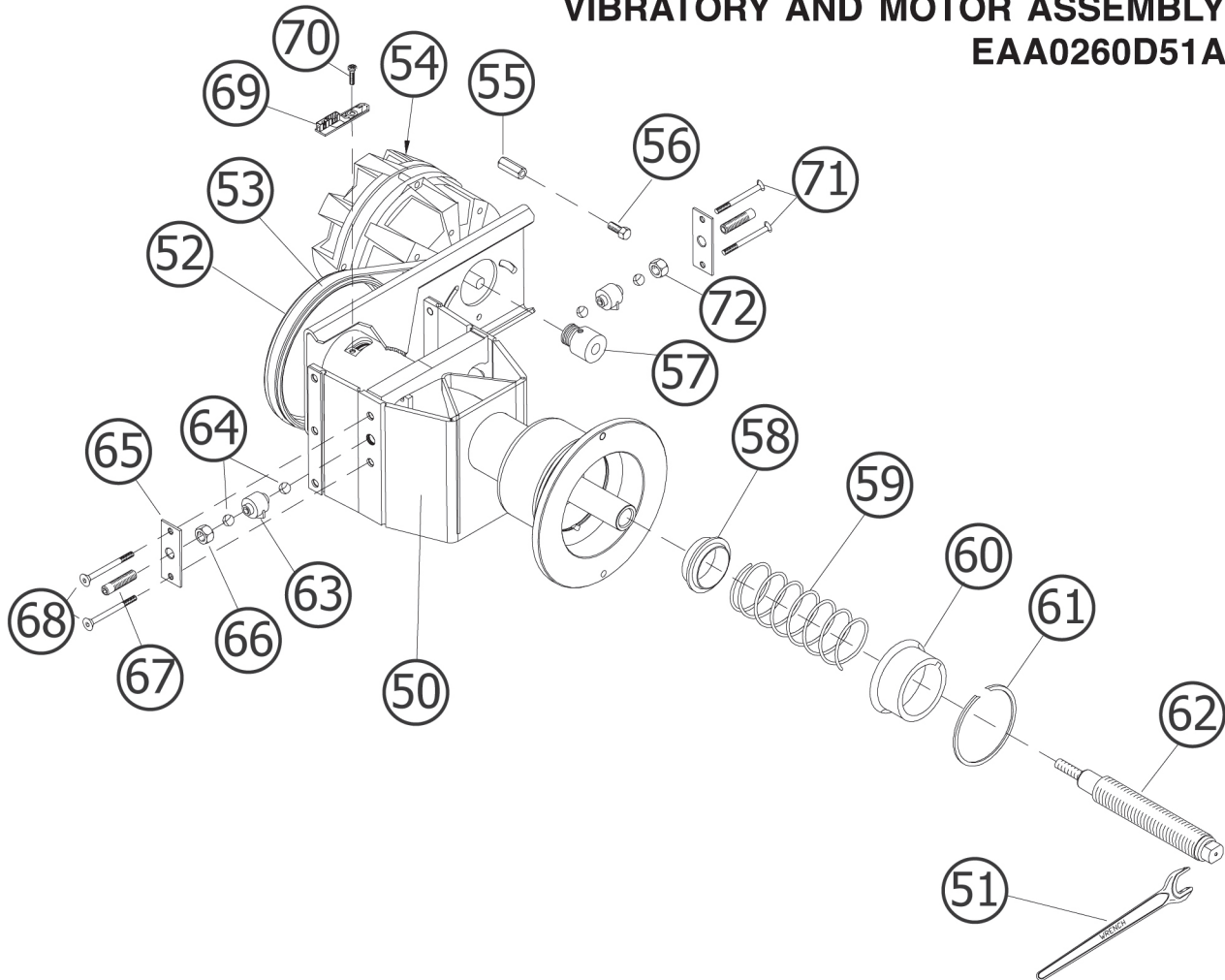


Key	Stock Number	Description
32	EAC0053J09A	Cover-wheelguard, Y2k
33	EAS2021J18A	Weldment-wheelguard, M1
34	EAM0006G02A	Wheelguard Tube Ring Nut (2)
35	EAC0060G03A	Bushing, Wheelguard Tube (2)
36	1-16941	Washer, Plain 10mm
37	1-34901	Screw - Hhm M10 X 1.5 X 50mm
38	EAS2027G82A	Wheelguard Arrest Plate
39	1-11833	Nut M8, Steel
40	1-33201	Screw - Hhm M8 X 1.25 X 50mm
41	EAM0003J03A	Tube-wheelguard Support, M1/L1
42	EAM0003J09A	Spring - Torsion, Wheelguard
43	1-47810	Screw, Set, M8 X 8mm Flat Pt (2)
44	1-11233	Nut-hex, M3 Din 934 (2)
45	1-1248	Washer-ext, Shakeproof, M3 (2)
46	1-9541	Washer-flat, M3 Din 125a (2)
47	EAS2027G24A	Plate-switch Mounting
48	2-7261	Microswitch
49	1-34901	Screw - Hhm M10 X 1.5 X 50mm (2)

(Parts list continued on Page 4)

EEWB304A - Electronic Motorized Wheel Balancer

VIBRATORY AND MOTOR ASSEMBLY EAA0260D51A

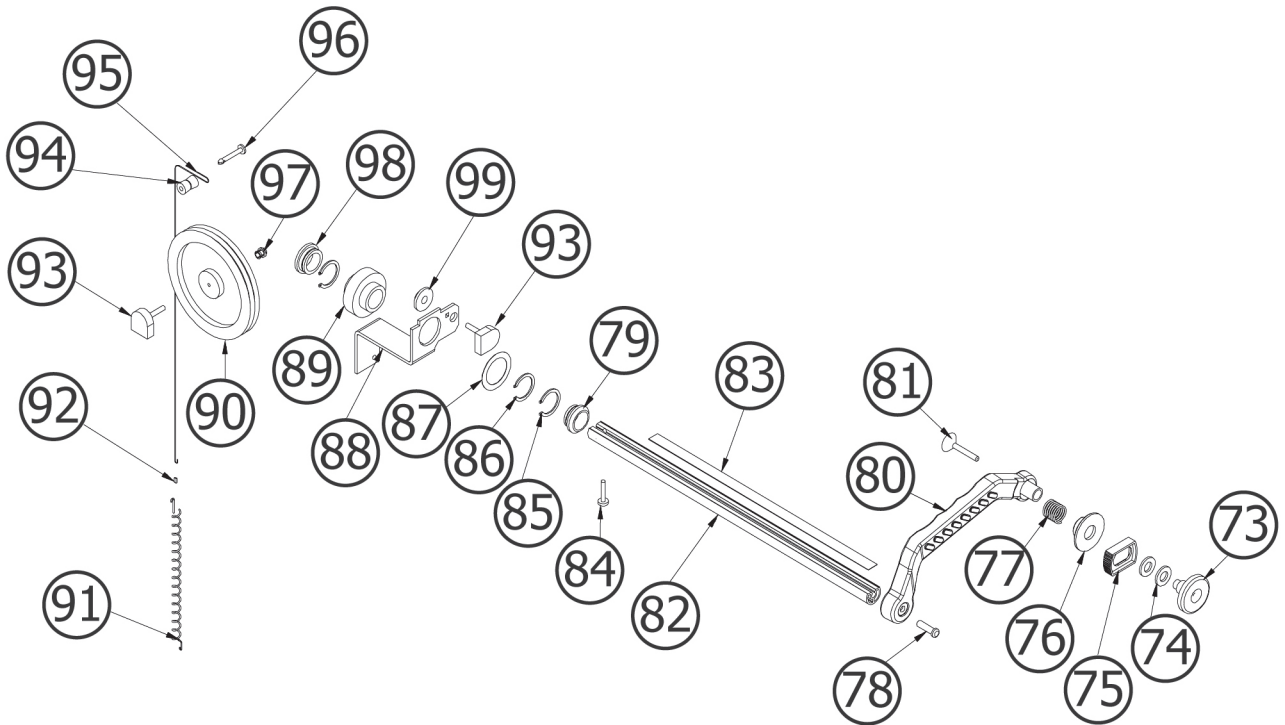


<u>Key</u>	<u>Stock Number</u>	<u>Description</u>	<u>Key</u>	<u>Stock Number</u>	<u>Description</u>
50	EAA0260D51A	Vibrator Ass'y-motorized	63	EAA0260D59A	Transducer
51	8-01050A	Open - End Wrench Sw19	64	8-1144	Ball, Steel (4)
52	EAM0005D12A	Drive Wheel	65	1-2967	Pretension Spring (2)
53	8-3531	Multirib Belt 5 PJ 711 Din 7867	66	1-11833	Nut-Hex M 10 X 1 DIN 934
54	2-22066	Motor, AC 120w 1 Ph 220-240v - 50/60 Hz	67	EAM0005D07A	Setscrew - Hex Socket M 10 X 1 (2)
55	EAM0005D09A	Motor Distance bolt (2)	68	1-19903A	Screw Hex Socket / Counter- sunk M 4 X 65 (2)
56	1-30701	Screw Hex HD M 6 X 12	69	EAA0260D09A	Encoder PCB
57	EAM0005D08A	Motor Pulley	70	1-13004	Screw Phillip Pan HD M 4 X 6
58	EAC0058D03A	Spring Centering Ring	71	1-17403	Screw Hex Socket / Counter- sunk M 4 X 25 (2)
59	1-6498	Spring - Compression 5 X 63 X 120	72	1-4034	Nut - Hex M 10 X 1 DIN 439
60	EAS2025D14A	Spring Case Deep Draw	-	EAW0239D00A	Ribbon Cable Vibratory
61	1-13077	Snap Ring			
62	EAM0005D14A	Threaded Shaft Tr 28,5 X 3,5			

(Parts list continued on Page 5)

EEWB304A - Electronic Motorized Wheel Balancer

2D SAPE ASSEMBLY



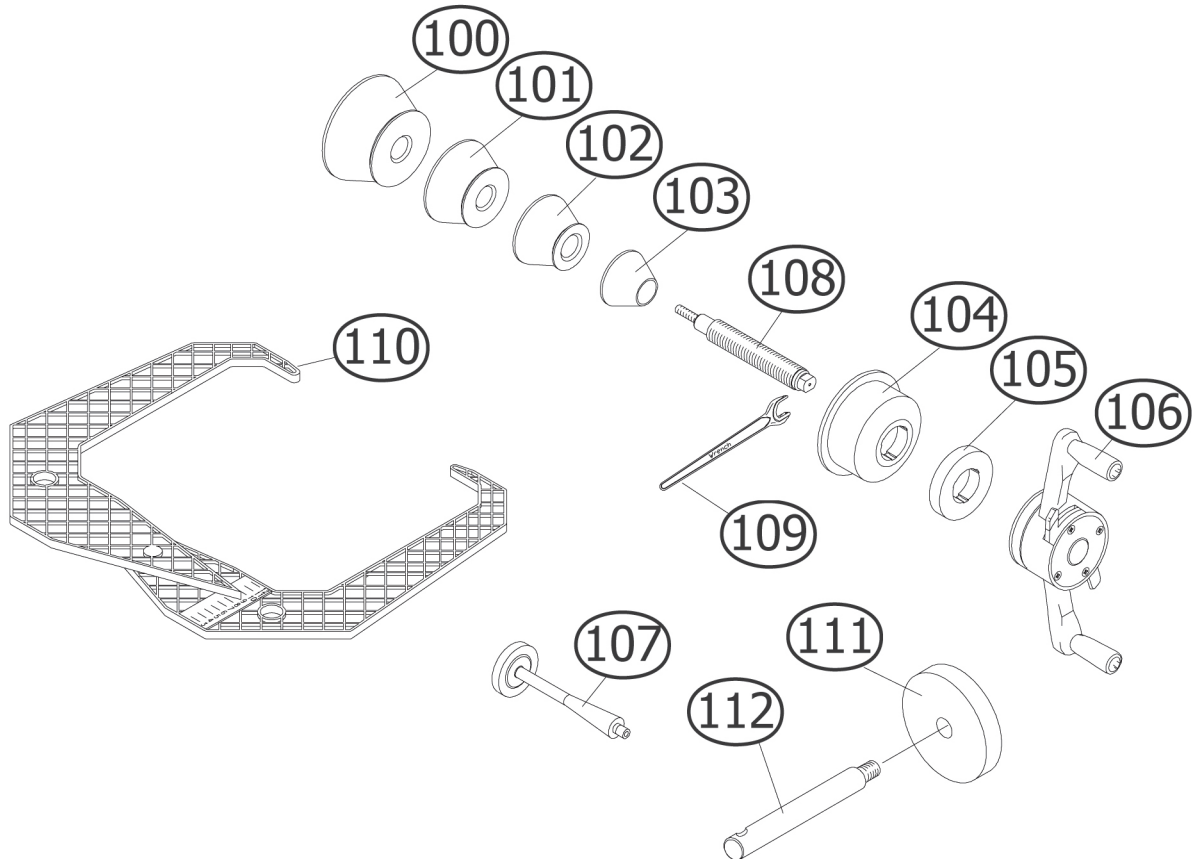
Key	Stock Number	Description
73	EAC0058D11A	Disk - Touching
74	1-11841	Washer - Plain, M10.5 Din 125
75	EAC0058D09A	Ejector
76	EAC0053J06A	Adjuster - Arm, Sape
77	1-06868A	Spring - Comp D145e, Din 2098
78	1-3824	Screw - Self Tap,6 X 12mm
79	EAM0005D38A	Bushing 1
80	EAC0053J03A	Arm-sape
81	1-3624	Screw - Fhms,5x40mm,Self Tap
82	EAM0005D37A	Rod - M1
83	EAL0345D01A	Measure Tape - Sape
84	1-13609	Screw-shcs, M4-16 8.8 (2)
85	1-4577	Ring-snap,25 X 1.20 (2)
86	1-13377A	Circlip - 27 X 1.20
87	1-07162A	Shim Ring - 28 X 40 X
88	EAS2025D15A	Angle - 2d Sape
89	EAC0058D12A	Cog Wheel - 56 Tooth
90	EAC0058D06A	Rope - Reel 290mm
91	1-03267A	Tension Spring - Sape
92	2-07557A	Sleeve - Compression,Oval
93	EAA0266D20A	Rotative Transducer - Assy (2)
94	EAM0005D35A	Guiding Reel
95	6-00404A	.700 Ft Rope-hemingway Dyneema, Type 40 (2)
96	8-1940	Pin-pushin, Nylon, .165 X 1.062
97	2-07657A	Clamping Device With Nut (2)
98	EAM0005D39A	Bushing 2
99	EAC0058D13A	Cog Wheel-28 Tooth

(Parts list continued on Page 6)

EEWB304A - Electronic Motorized Wheel Balancer

SHAFT ADAPTERS AND ACCESSORIES

Cone Kit Part Number EAA0247G50A



<u>Key</u>	<u>Stock Number</u>	<u>Description</u>
100	EAM0003J13A	Cone, 89-132 mm
101	EAM0003J12A	Cone, 82-99 mm
102	EAM0003J11A	Cone, 68-85 mm
103	EAM0003J10A	Cone, 43-72 mm
104	8-02040A2	Cup - Pressure
105	8-02040A1	Disk - Pressure
106	8-02040A	Quick Nut
107	EAM0005D13A	Weight - Calibration
108	EAM0005D14A	Stub Shaft
109	8-01050A	Wrench - Fork, 19mm
110	EAA0247G21A	Caliper - Rim Width
111	EAC0060G02A	Flange - Cover, Hook (4)
112	EAM0006G01A	Hook - Storage (4)
-	ZEEWB304A9	Lit Pack - EEWB304A